

— Cruise & Ferry —

INTERIORS



The Crystal Symphony is renowned as one of the most beautiful cruise ships in the world. Launched last May by the Japanese shipbuilding group NYK, it is managed by Crystal Cruises. All 50,000 tonnes of the Crystal Symphony bear the hallmark of elegant, top quality design and the ship accommodates 960 passengers in luxury cabins, all offering an ocean view.

After winning the contract to provide the designs and fittings of cabins and suites on the Crystal Symphony, we decided to furnish the vessel with a touch of Italian style, characterised by original and inventive features. Renowned world-wide as the nation of elegance and good taste we were determined to uphold Italy's reputation by assuring only top quality fittings and sophisticated colour schemes were used.

We have been responsible for fitting the cabins on both the Symphony and her sister ship the Crystal Harmony, and recognise the importance of passenger accommodation in deciding a ship's structure and layout. In order to maximise the number of cabins overlooking the sea it is necessary for the basic

shape to be narrow and rectangular. While this has been a fundamental principle of accommodation planning for the last 30 years, we set ourselves the task of avoiding the monotonous, cramped appearance associated with ships' cabins. With our ample experience and design flare for confined spaces, we fully committed ourselves to an exceptional goal: to eradicate the "box syndrome" that arouses feelings of claustrophobia.

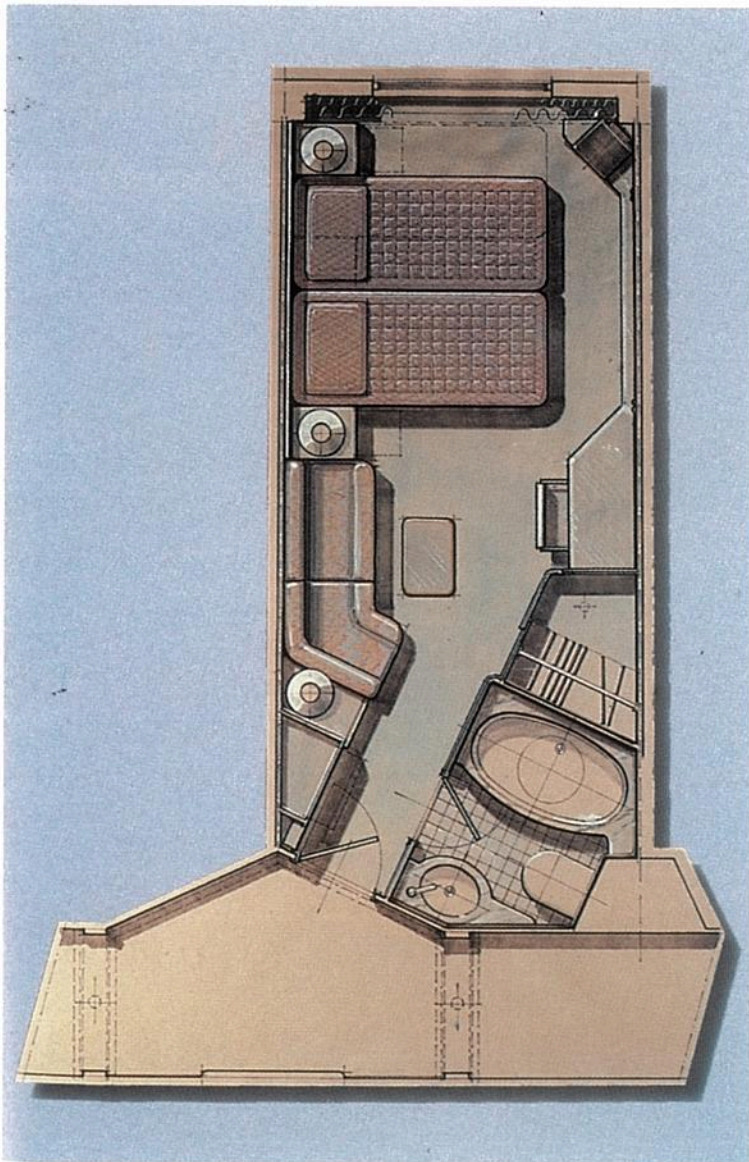
The box-like appearance of a cabin is primarily due to limited dimensions, parallel walls and the fact that the whole room can be seen in one glance. Our designs break with the deep rooted traditions of a box shaped layout, favouring instead amazing angled visions enlivened by props and side effects to create an illusion of spaciousness.

The next step is to ensure that fittings such as beds, tables and chairs make the most efficient use of space possible.



The Crystal Symphony Offers Space On the Seas

By Vittorio Garroni



We have applied this design concept to the staterooms on both the Crystal Symphony and her sister ship the Crystal Harmony. On the Crystal Symphony we were the principal architects for the penthouses, which encompass 367 sq. feet of living space. Special features of the penthouse accommodation include a private verandah, a jacuzzi, a stocked bar and a personal butler service.

Careful consideration was given to the selection of material and furnishings. Eventually we chose exquisite fabrics and decorations by the Lorenzo Rubelli company and silk damasks by Fadini & Borghi. The interior was also fitted with the world famous Murano's glass by Barovier & Toso, a sparkling complement to the cherry-wood furniture we designed exclusively for the ship. Great care was taken to balance the various elements of the interior design and even the decorative carpets were thoroughly researched to assure continuity with the elegance and sophistication of the cabins.

In the staterooms we have introduced a very classical style. Colours and tones were blended to match the light powder blue or creamy pink colours of precious Italian textiles. By working with well proportioned wooden mouldings and enriching the

Left: drawing of de luxe stateroom which illustrates the designer's full use of available space.

Our high-quality cabin and bathroom modules save time and money

Kvaerner Masa-Yards Piiikkiö Works produces prefabricated, ready-to-install modular cabin and bathroom units



M/V Crystal Symphony, luxury cruise liner for Crystal Cruises, Inc. Built by Kvaerner Masa-Yards Inc. Turku New Shipyard.

Prefabrication produces better quality than construction on board. The result: superior quality cabins.

WAS

The Wet Module and Accommodation System (WAS):

- ◆ perfected over 30 years of development and production
- ◆ for shipbuilders, offshore-rig builders and hotel builders worldwide
- ◆ saves construction time and money
- ◆ customized down to the smallest detail
- ◆ individually designed for the individual customer
- ◆ completely furnished and fully equipped
- ◆ a patented system available through a large network of licensed producers
- ◆ suitable for semi-modular deliveries

Meets your requirements for the best in passenger and crew comfort

Kvaerner Masa-Yards Piiikkiö Works

21500 PIIKKIÖ, Finland
Tel: +358 21 474 300
Fax: +358 21 472 6000

surfaces with inlaid stripes, we gave them an Italian style and character.

We were also responsible for the design and planning of the "Prego Restaurant". Decorative Venetian style features and a warm Mediterranean colour scheme were combined with pictures depicting Canaletto's views and shining Murano's glass to adorn the walls.

The company philosophy is elegance, creativity and style coupled with rational and innovative design.

Below: artist's renderings and full-size mock-up of a penthouse suite with verandah allows the opportunity for the designer to view his work and make adjustments before the final seal of approval is given.

This commitment to professionalism was acknowledged in 1987 when we won the confidence of Nippon Yusen Kaisha as consultant for Mitsubishi Heavy Industries. In addition to this we also designed the interiors for the Lady Crystal, a cruise charter operating in Tokyo Bay, which offers a variety of facilities such as restaurants and business meeting areas. Our creative skills have been applied to a variety of projects and we have been involved in the restoration of historical areas and the conversion of old offshore platforms into small floating villages. Whatever the scale of the project our team is always determined to further its country's and company's reputation for style and detail.

